



***-40°C UPRIGHT FREEZER***

***LUF-B23***

## -40°C Upright Freezer LUF-B23

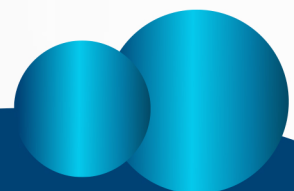
The **-40°C Upright Freezer LUF-B23** is a vertical type deep freezer comes with 525 L capacity and incorporated with advanced cooling circulation technology. Offers -20°C to -40°C temperature range with increment at 0.1°C. It is a large-capacity biomedical freezer with direct cooling system and manual defrost. This double door, upright freezer features microprocessor controlled system with LED digital display for ease of observation. Equipped with eco-friendly CFC-Free and HCFC-Free refrigerant. With 4 shelves and 10 drawers design, the 4 casters aids in easy mobility and handling. It provides effective storage of life-saving vaccines and samples for diagnosis.

### FEATURES

- ◆ Managed and monitored by an integrated microprocessor controller
- ◆ Double door design with safety lock along with door handle for safe operation
- ◆ Fast cooling and multi-layer shelves evaporator
- ◆ Digital LED display of inner temperature and ambient temperature
- ◆ Lockable control panel to prevent unauthorized access to settings
- ◆ 100 mm thick insulation layer for both cabinet and doors saves energy
- ◆ Energy savings without sacrificing protection
- ◆ Easy mobility and lockable casters
- ◆ Availability of remote alarm
- ◆ Safety alarm system to detect high or low temperature, high ambient temperature, power failure, low battery and sensor malfunction
- ◆ Equipped with three types of alarm indications, flashing light, remote and Buzzer
- ◆ It is complied with Certificate CE, ISO9001

### APPLICATIONS

The Upright Freezer is suitable for use in culture media, reagents and samples for testing, as well as for storage of enzymes for genetic research. It is designed to store vaccines, blood plasma and many other biological materials which is widely use in research institution, clinics, electronic and medical fields.



## SPECIFICATION

|                            |                                |
|----------------------------|--------------------------------|
| <b>Model no.</b>           | <b>LUF-B23</b>                 |
| Temperature Range          | -20°C to -40°C                 |
| Cooling Performance        | -40°C                          |
| Cabinet Type               | Upright                        |
| Gross Capacity             | 525 L                          |
| Cooling Type               | Direct cooling                 |
| Defrost Mode               | Manual                         |
| Refrigerant                | CFC Free                       |
| Door                       | Double                         |
| Noise                      | 42 dB                          |
| Temperature Control        | Microprocessor                 |
| Display                    | LED                            |
| Caster                     | 4                              |
| Foot                       | 2                              |
| Shelves                    | 4                              |
| Drawer                     | 10                             |
| Power Supply               | 220 V to 240 V /50 Hz to 60 Hz |
| Power                      | 310 W                          |
| Internal Dimension (W×D×H) | 684×612×1184 mm                |
| External Dimension (W×D×H) | 880×855×1912 mm                |
| Net Weight                 | 175 kg                         |
| Gross Weight               | 200 kg                         |

## STANDARD ACCESSORIES

- ◆ Test hole

## OPTIONAL ACCESSORIES

- ◆ Data logger

