



***-40°C UPRIGHT FREEZER***

***LUF-B21***

## -40°C Upright Freezer LUF-B21

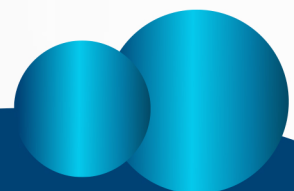
The **-40°C Upright Freezer LUF-B21** is a vertical type deep freezer comes with 268 L capacity and offers -20°C to -40°C adjustable temperature range with increment at 0.1°C. It is a large-capacity biomedical freezer with direct cooling system and manual defrost. Offers a high-performance and space-saving alternative for cold lab storage. Features microprocessor controlled system with LED digital display for ease of observation. Single door design with safety lock along with door handle for authorized access. With 4 shelves and 2-foot design, the 4 casters aids in easy mobility and handling. Integrated design of cold shelf and evaporator provides additional refrigeration efficiency. Equipped with eco-friendly CFC-Free and HCFC-Free refrigerant. It provides effective storage of life-saving vaccines and samples for diagnosis.

### FEATURES

- ◆ Designed with High-tech integrated sensors to display and control temperature
- ◆ Single door design with safety lock for safe operation
- ◆ Dirt-pickup resistant plastic coated shelves and adjustable height
- ◆ Availability of foot and adjustable shelves
- ◆ Easy mobility and lockable casters
- ◆ Energy savings without sacrificing protection
- ◆ Incorporated with backup battery to display temperature and to operate audible and visual alarm system for up to 48 hours without AC power
- ◆ Equipped with three types of alarm indications, flashing light, remote and Buzzer
- ◆ Built-in alarm for high and low temperature, high ambient temperature, high and low voltage alarm, low voltage in backup battery, power failure, sensor error, door ajar and hot condenser
- ◆ It is complied with Certificate CE, ISO9001

### APPLICATIONS

-40°C Upright Freezer is designed to store reagent, vaccines, blood plasma, and many other biological materials which is widely used in research, electronic, clinics, institution and medical fields. It is suitable for use in culture media, reagents and samples for testing, as well as for storage of enzymes for genetic research.



## SPECIFICATION

<b>Model no.</b>	<b>LUF-B21</b>
Temperature Range	-20°C to -40°C
Cooling Performance	-40°C
Cabinet Type	Upright
Gross Capacity	268 L
Cooling Type	Direct cooling
Defrost Mode	Manual
Refrigerant	CFC Free
Door	Single
Noise	40 dB
Temperature Control	Microprocessor
Display	LED
Caster	4
Foot	2
Shelves	4
Power Supply	220 V to 240 V /50 Hz to 60 Hz
Power	300 W
Internal Dimension (W×D×H)	508×455×1137 mm
External Dimension (W×D×H)	673×676×1630 mm
Packing Dimension (W×D×H)	767×782×980 mm
Net Weight	113 kg
Gross Weight	125 kg

## OPTIONAL ACCESSORIES

<b>Sr. No</b>	<b>Name of Accessories</b>
1	Test hole
2	Data logger

