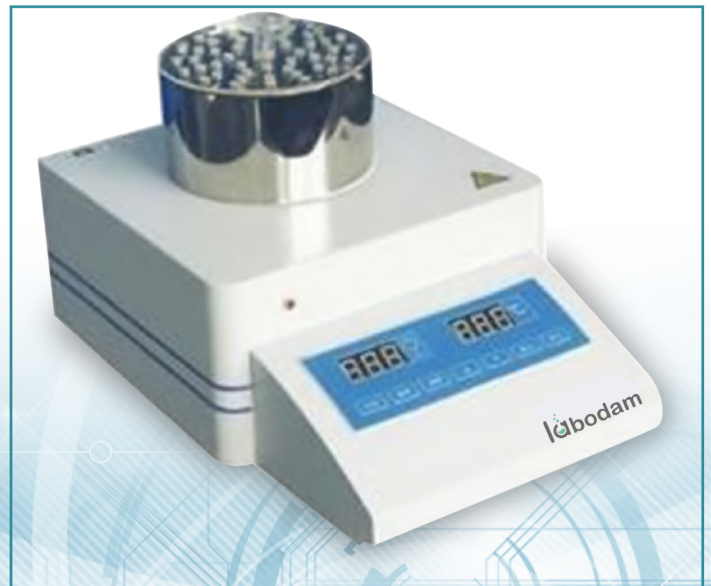


# COD Analyzer LCDA-A10



## COD Analyzer LCDA-A10

COD Analyzer LCDA-A10 is a benchtop unit which measures COD of the water sample in the range of 0 to 1500 mg/L by dichromate colorimetric method. It comes along with digester, dispelling 21 samples simultaneously by sealing reflux method within digesting time range of 0 to 120 min. Functions with 200 data storage capacity and two point calibration (zero and full scale calibration). Used in water quality monitoring and environmental protection, petroleum, chemical industry and health etc.

### Features

---

- » COD range 0 to 1500 mg/L
- » Dichromate Colorimetric Method
- » Two-point calibration: zero and full scale calibration
- » Digestion method: Sealing reflux method
- » LCD display
- » Measurements can be displayed directly
- » Data storage capacity 200 data
- » LED light source
- » USB interface to connect PC
- » Data can be consulted, deleted and printed

### Applications

---

Used in water quality monitoring and environmental protection, petroleum, chemical industry and health etc.

# COD Analyzer LCDA-A10

## Specification

Model No.	LCDA-A10
Measuring principle	Dichromate colorimetric method
COD range	0.0 to 1500 mg/L
Basic accuracy	$\leq 150$ mg/L: $\pm 8\%$ reading $\pm 1$ mg/L $\geq 150$ mg/L: $\pm 8\%$ reading
Repeatability	3% reading
Stability	$\pm 2\%$ (reading)/15min
Digestion method	Sealing reflux method (could dispelling 21 samples simultaneously)
Digestion temperature	RT to 165°C
Digestion time	0 to 120 min
Calibration	Two-point calibration (zero and full scale calibration)
Data storage	200 data with time-and-date stamp
Data view, delete and print	Yes
Display	LCD
Power supply	AC 110/220 V $\pm 10\%$ , 50/60 Hz
Packaging dimension	COD Analyzer: 370 × 305 × 330 mm
	Digester: 575 × 435 × 285 mm
Gross weight	8.5 kg